



Annual Report 2020



Roya and her brother, Dara, making playdough during RVRN's 100 Elk Online Program

MESSAGE FROM JULIE FINNIN DAY, CHAIR AND EXECUTIVE DIRECTOR

Like much of the world, Rainbow Valley Resource Network (RVRN) faced many challenges in navigating the 2020 pandemic: cancellation of all in-person programs, restricted development activity—and an uncertain future, candidly. Yet, with lots of prayer, and the support of our growing donor community, we looked beyond uncertainty and found fresh ideas. By year's end, we had enrolled more participants and raised more money than ever, and launched new programs for the coming year. The "pandemic pivot" even helped us see how to achieve a long-held desire: offering monthly online gatherings for our loved ones with developmental/special needs. As you'll find in this report, demand for RVRN's services is continually expanding—and we are committed to meeting the need with your help.

On the board, we often revisit a favorite passage from the Christian Science textbook: "Love is impartial and universal in its adaptation and bestowals." (*Science and Health, with Key to the Scriptures*, p. 13) Love's *adaptations* are especially meaningful as we seek new ways to bless this under-served group. You are a vital part of that blessing. Thank you!

MISSION

Rainbow Valley Resource Network (RVRN) is building a compassionate sense of community and support for Christian Scientists with developmental/special needs and their families through financial assistance, informational and inspirational resources, and experiential enrichment activities.



Jennifer's performance for the talent show at RVRN's 100 Elk Online Program



SERVICES

RVRN is the only nationwide support network dedicated to Christian Scientists caring for loved ones with developmental/special needs. These families rely on RVRN for irreplaceable services.

Networks

- **Family Support Network (FSN)** – The first such community connecting Christian Science (CS) families and caregivers through tailored programs and conversations so they feel supported in their unique journey.
- **Loved One Network (LON)** – Fostering community for our loved ones and nurturing meaningful connections with one another through regularly hosted activities, thus enriching the lives of this under-served group of Christian Scientists.

Programs

- Coordinating and hosting experiential and enrichment activities for Christian Scientists with developmental/special needs and their families.

Financial Assistance

- Providing subscriptions to Christian Science Publishing Society (CSPS) publications.
- Assisting with CS practitioner and nurse bills.
- Making aid available for enrichment activities and respite care.

Resources

- Offering useful information about other organizations and professionals that serve this special community.



HIGHLIGHTS

In 2020, an extraordinary response from donors answered an urgent call for support during the global pandemic – which stabilized operations and funded new initiatives.

- Successfully transitioned programs to online format in response to mandates prohibiting and drastically limiting in-person gatherings.
- Record-breaking attendance for 5th season of 100 Elk (online) family enrichment event; grew attendance 55% over 2018 (last year the event was held).
- Launched new fall inspirational video presentation; 173 registrants, increased constituent contacts.
- Piloted Online Christmas Gathering; for 20% of attendees, it was their first RVRN program.
- Expanded organization's vital role as advocate for our families to the wider CS community.
- Started an endowment to provide long-term financial viability.

"I am exceedingly grateful for the support I receive from RVRN. I cannot do this alone. With each day, the veil is lifted a little bit more. Spirit is truly guiding our every step as we wake to know—and witness—a world more bright!"

—Parent participant



Participants at RVRN's 100 Elk Online Program

FINANCIAL OVERVIEW

Demonstrations of progress and growth, thanks to all our cherished supporters!



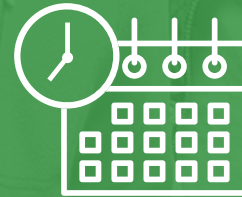
TOTAL CONTRIBUTIONS CLIMBED +27%
(2019 - 2020)



5-YEAR GROWTH TREND -
EXISTING DONORS
(2016 - 2020)



NEW DONOR RENEWAL RATE
EXPANDED +36%
(2019 - 2020)



TOTAL ANNUAL INCOME FROM MONTHLY
RECURRING DONORS INCREASED +5%
(2019 - 2020)



ASSISTANCE PROVIDED FOR
PRACTITIONER CARE, RESPITE, AND
CSPS SUBSCRIPTIONS ESCALATED 270%
(2019 - 2020)



GIFTS FROM INDIVIDUALS ROSE +77%
(2019 - 2020)

Additional financial information is available upon request. Rainbow Valley Resource Network, Inc. is a 501(c)(3) organization.

IMPACTING LIVES



RVRN is delighted to share with you stories of healing and progress, as well as expressions of gratitude. Told in the words of our constituents, they convey the impact and benefits of our mission better than we could ourselves.



Deborah, David, and Alissya go for a “walk and roll” on the beach

“RVRN reaches out to families, providing regular opportunities to support each other through its Family Support Network. I've really enjoyed hearing about other families' needs and accomplishments. In this network, we look to develop the underlying spiritual ability, rather than just physical and mental abilities.”

—Deborah, RVRN parent

Read more of Deborah's story: rvrnetwork.org/impacting-lives

GRATITUDE FOR FINANCIAL ASSISTANCE WITH CSPS PERIODICALS

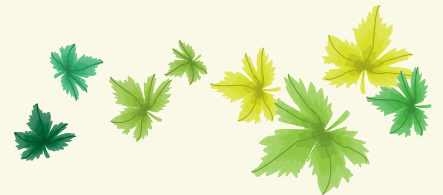
“The Full-Text Bible Lesson is my copilot! Whether it's preparing for a day of CS nursing, parenting, or preparing for travel, the Lesson-Sermon has provided needed inspiration and instruction. When the day is hemmed with the Lesson, it is less likely to unravel. I'm grateful for its practicality and handiness while I'm at home, working, or on the road!”

—RVRN parent

www.rvrnetwork.org | 314-309-7029 | admin@rvrnetwork.org

HOW CAN YOU GET INVOLVED?

- Share information with CS families who can benefit from RVRN's services.
- Let us know if your church is interested in an RVRN presentation.
- Follow RVRN on Facebook and YouTube.
- Contact us and learn about volunteering opportunities.
- Give a gift and become a member of our **circle of support**.



BOARD MEMBERS

(Listed alphabetically)

- Chris Cheney, CA
- Rich Clarke, MA | Vice Chair and Treasurer
- Julie Finnin Day, IL | Chair and Exec Director
- Brady Fyfe, MO
- Todd Herzer, CA
- Barb Horton, FL | Secretary
- Phebe Telschow, MO

Learn more about these dedicated volunteers and why they are inspired to serve RVRN: rvrnetwork.org/about/#boardandstaff

“Our families know how meaningful it is to feel true support – not from the world that believes labels, but from fellow Christian Scientists who are seeing God's children in all their perfection.”

—Julie Finnin Day, Chair and Executive Director